

# WALK-IN CLIMATIC CHAMBER

tradition. knowledge. responsibility.



## Climatic chamber for large objects

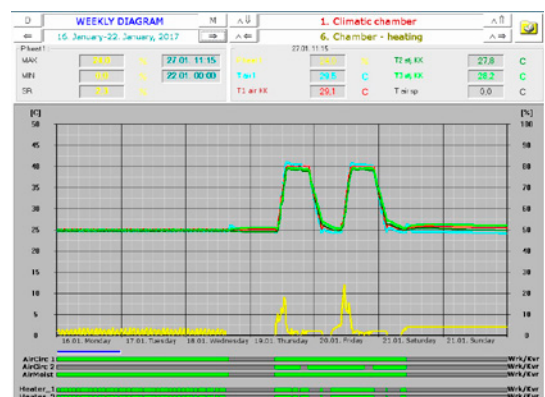
Being one of the largest in Europe, the walk-in climatic chamber from KONČAR Institute offers wide range of accredited test methods according to HRN EN ISO/IEC 17025 standard. Specifically designed for large objects, it is a perfect facility for testing equipment that can be found in a variety of industries.

### Characteristics:

- » **Interior dimensions: 4,9 × 3,3 × 3,25 m**
- » **Workspace volume: 50 m<sup>3</sup>**
- » **Temperature range: -55 °C to +100 °C**
- » Max change: 0.1-0.5 °C/min
- » Relative humidity: 10-100%
- » Max load weight: 5000 kg
- » Platform on rails for easier maneuvering with objects
- » Multiple AC/DC power sources up to 400 kW
- » Multiple passive loads
- » Other equipment (exhaust pipes, water pipes, etc.)

### Climatic tests available:

- » Cold tests
- » Dry heat tests
- » Temperature change tests
- » Dump heat, cyclic tests
- » Damp heat, steady state tests



EN 60068-2-1\*

EN 60068-2-2\*

EN 60068-2-14\*

EN 60068-2-30\*

EN 60068-2-78\*

\*Accredited methods, other accredited methods available in our smaller chambers. For more information, please contact us or visit our website.

## Application Industries

Type and pre-compliance testing offered at competitive price levels!

### Applications:

- » Power electronics
- » Railway equipment and applications
- » Transformers
- » Rotating machines
- » Automotive equipment
- » Other applications

### Common products tested:

- » Train propulsion converter (1500 kg)
- » Tram propulsion converter (320 kg)
- » Nuclear powerplant control cabinet
- » Instrument transformer combined U/I (550 kg)
- » Train pantograph (3.2 m)
- » Railway crossing half-barriers
- » Other products



## One-stop-shop laboratory testing

Accredited laboratories under ISO/IEC 17025 at one place offer complete testing of your products! Using a single location expensive and time consuming testing of products can be eliminated. Highly educated personnel helps customers in their product launch process.

Our laboratories (\*accredited):

- » **High Voltage Laboratory\***
- » **High Power Laboratory\***
- » **EMC and Safety Laboratory\***
- » **Calibration Laboratory\***
- » **Laboratory for Physical And Chemical Testing\***
- » **Laboratory for Mechanical and Technological Testing\***
- » **Laboratory for Noise And Vibration\***
- » **Environmental Laboratory\***
- » Laboratory for Rotating Machines
- » Power Electronics and Electrical Drives Laboratory



As notified body of the European Commission (NB 2494) we can assist you through the entire process of obtaining CE mark for your products.

**Contact us for more information!**



[www.koncar-institut.com](http://www.koncar-institut.com)



[klima@koncar-institut.hr](mailto:klima@koncar-institut.hr)



KONČAR Electrical Engineering Institute, Inc.



Fallerovo šetalište 22  
Zagreb 10002, Croatia